



LEGAL PREPAREDNESS FOR INCORPORATING TELEMEDICINE INTO THE POST PANDEMIC HEALTH CARE ECOSYSTEM

TAIWAN EXPERIENCE

Meng-Chen TSOU, Hsiu-Yi YANG
National Yang Ming Chiao Tung University
nina.mc.tsou@gmail.com



THE AUTHORS

Nina Meng-Chen
Tsou

- PhD. Candidate, National Yang Ming Chiao Tung University
- Master of Law
- Master of Public Health



Hsiu-Yi Yang

- Professor, Institute of Public Health, National Yang Ming Chiao Tung University
- JSD, Stanford University
- Research Interest: Patient Autonomy, Health Law





TABLE OF CONTENTS



01

INTRODUCTION

Taiwan and E-Health
Telemedicine and COVID

02

LEGAL FRAMEWORK & AMENDMENTS IN TAIWAN

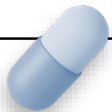
03

CONCLUSION



01

INTRODUCTION



TAIWAN AND E-HEALTH

- Taiwan Profile
 - Population: 23 million
 - Area: 35,886 km²
- Health Care System
 - National Health Insurance (NHI) from 1995
 - Health Expenditure: 6.54% of GDP
- E-Health Infrastructure
 - Overall internet penetration rate: 84.3%
 - NHI MediCloud since 2014

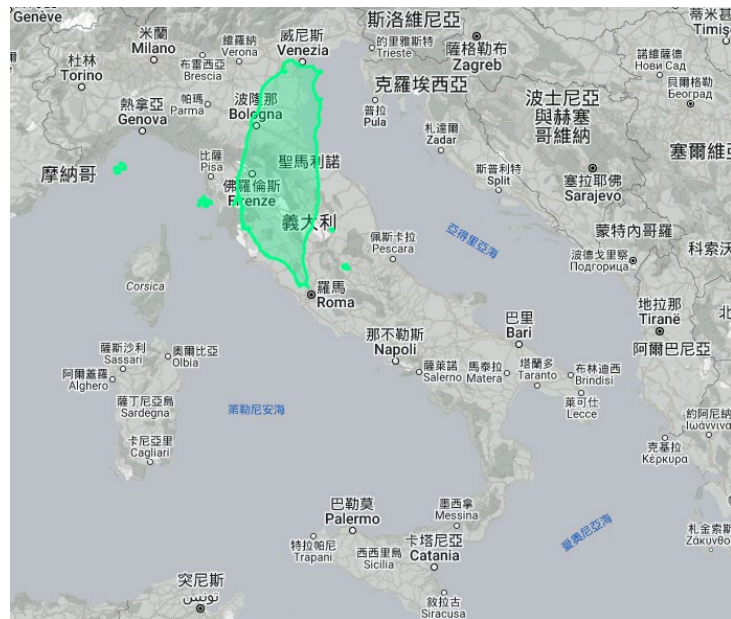




Fig. 6.3 Functions of the NHI MediCloud System

Po-Chang Lee et. al, *Digital Health Care in Taiwan: Innovations of National Health Insurance* (Cham: Springer International Publishing, 2022).



TAIWAN AND COVID-19

NON PHARMACEUTICAL INTERVENTIONS

Digital Surveillance
Boarder Control
Protective Equipments & Allocation

2020



2021

PHARMACEUTICALS

Drugs
Vaccines
Tests



2022

TELEMEDICINE

Scope expansion:
Usage: 1.85 million
from May 15th to Jun. 22th

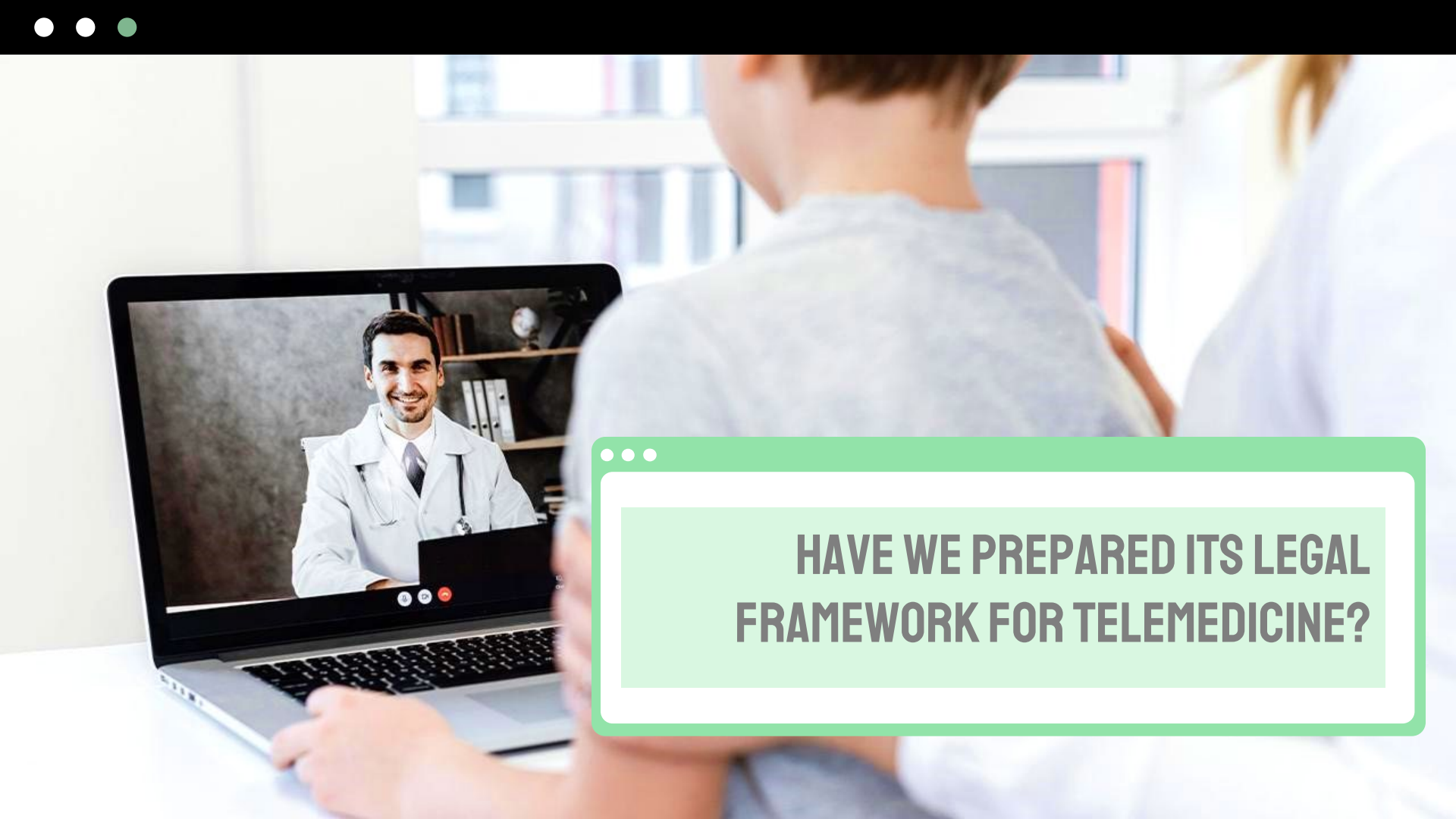
Telemedicine Rule Draft
Nov. 2022

NOW!





COVID-19 疫情發展圖



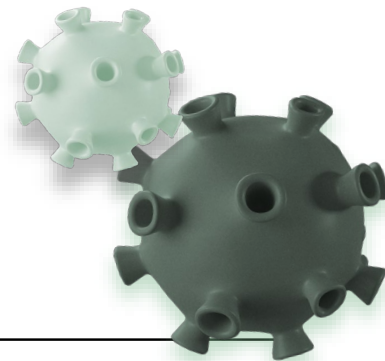


**HAVE WE PREPARED ITS LEGAL
FRAMEWORK FOR TELEMEDICINE?**



02

LEGAL AMENDMENTS IN TAIWAN



LEGAL ASPECTS RELATED TO TELEMEDICINE



SERVICE DELIVERY

Telemedicine Rule

DEVICE

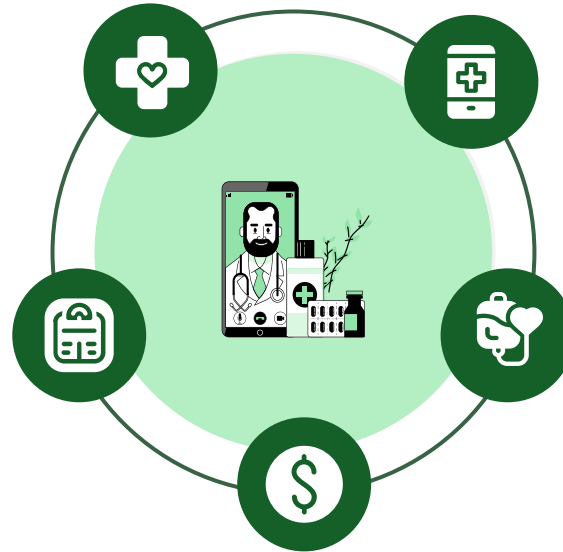
Medical Device Act

DATA

Regulations of electronical medical record

DISPENSING

Pharmacist's Act



DISBURSTMENT



TELEMEDICINE RULE (2018)

REMOTE AREA

SPECIAL CIRCUMSTANCES

- patients who require close monitoring within three months of acute hospitalization
- residents of long-term care facilities
- integrated care recipients of family doctors
- recipients of home health care integrated plans
- international patients

URGENT SITUATIONS

- situations where immediate medical treatment is required to save a life or to address an emergency

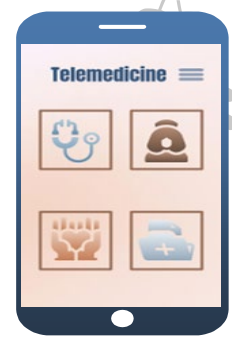


UNDER COVID PANDEMIC

- Stable chronic patients
- patients who require immediate medical treatment or who need to see a doctor during home isolation or quarantine
- Medical situation designated by local health authority

DRAFT (NOV. 2022)

- Long term medication care for chronic disease
- End-of-life care
- Care for mobility-impaired patients
- Care for disasters and infectious diseases



REGULATIONS OF ELECTRONICAL MEDICAL RECORD(JUL. 2022)

- Encryption mechanisms
- Electronic medical record exchange format
- Personal identity verification



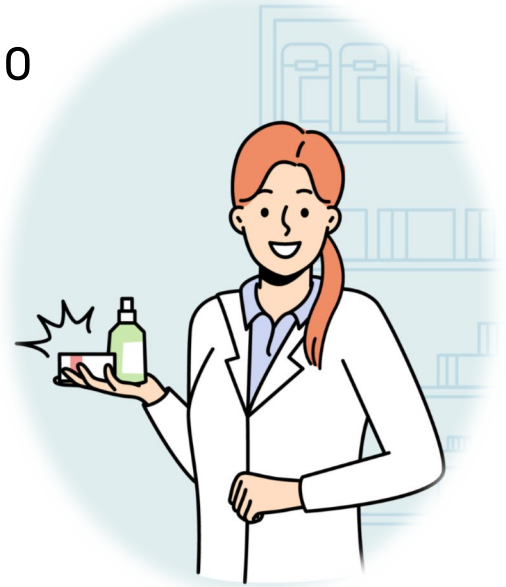
MEDICAL DEVICE ACT (2020)



- Includes responsibilities of medical device software developers
- Issue AI and medical device software guidelines

PHARMACIST ACT

Pharmacists can personally deliver medication to homes, but only within the county or city where they are registered to practice, which is compliance with the Pharmacists Act





03

CONCLUSION



TELEMEDICINE AND CARE SCARCITY

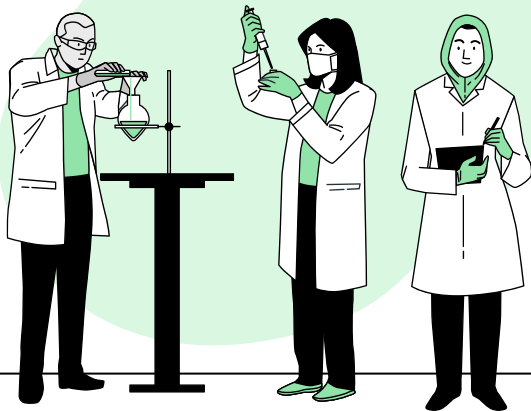


- Concept of the Digital Health Era
 - DIP Model: Decentralization, Integration, Precision
- Challenges to be faced
 - Digital Infrastructure: 5G
 - Resource allocation: the “must have” group
 - Information security and privacy: digital trust
 - Medical software and AI regulation: public-private partnership



ACKNOWLEDGEMENT

- We are grateful to the **National Science and Technology Council** of Taiwan for funding this research (MOST 110-2420-H-037-003).
- We appreciate the leadership and guidance of Professor **Tsuen-Chiun Tsai** throughout this project.
- We acknowledge the hard work and efforts of members involved in this research.



THANKS!

DO YOU HAVE ANY QUESTIONS?

nina.mc.tsou@gmail.com



CREDITS: This presentation template was created by **Slidesgo**, and includes icons by **Flaticon**, and infographics & images by **Freepik**

